

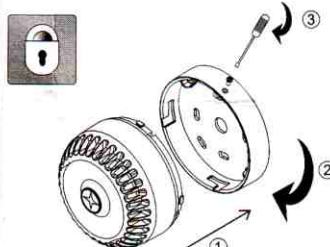
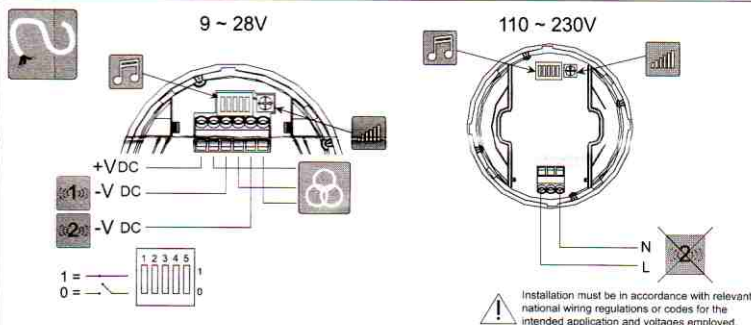
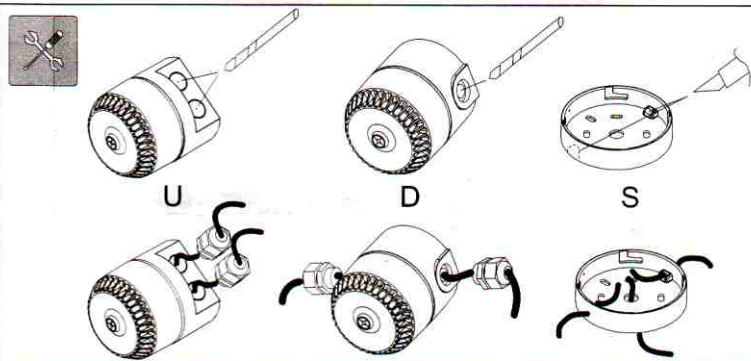
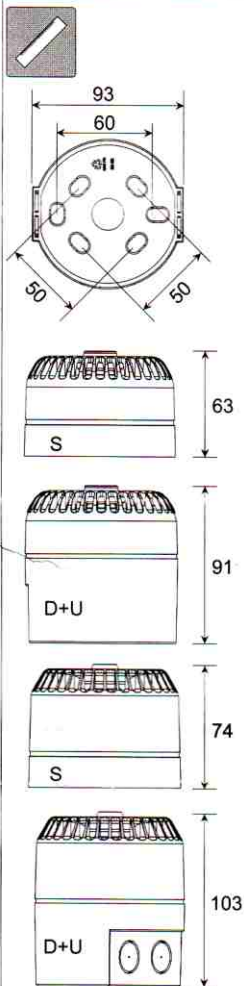
EAGLE (EBM)



EN54-3 Fire Alarm Device - Sounder

EN54-3		EAGLE		EAGLE	
V	18 ~ 28VDC	9 ~ 28VDC	110 ~ 230VAC		
I	30mA max	35mA			
C	0.28mm ² ~ 2.5mm ²	0.75mm ² ~ 2.5mm ²	6A Rating		
T	-25 °C ~ +70 °C	-10 °C ~ +55 °C			
W	ABS V0	ABS V0			
IP	Type A = S Type B = D/U	IP54 = S IP65 = D/U	IP54 = S IP65 = D/U		
M	6	32	32		

Product exceeds minimum requirements of EN54-3
See www.fullleon.com



1		2								@20 °C		
										mA	dB(A)	EN54-3 Min SPL @ 28Vdc @ Max Volume @ Loudest node dB(A)
1	14	11111		800 & 970Hz	2Hz (250ms~250ms)	BS Fire Tone	16	101	*			
2	14	11110		800 & 970Hz	7Hz (7/s)	BS Fire Tone	16	102	*			
3	14	11101		800 & 970Hz	1Hz (1/s)	BS Fire Tone	16	102	95			
4	14	11100		2850Hz	Steady		30	111	*			
5	4	11011		2400 ~ 2850Hz	7Hz		28	111	*			
6	4	11010		2400 ~ 2850Hz	1Hz		28	111	*			
7	14	11001		300 ~ 1200Hz	3s Sweep, 0.5s silence, then repeat	Dutch Fire Tone	16	99	97			
8	14	11000		1200 ~ 500Hz	1Hz	DIN Tone	14	99	94			
9	4	10111		2400 & 2850Hz	2Hz (250ms~250ms)		28	110	*			
10	14	10110		970Hz	0.5Hz (1s On / 1s Off)		10	101	*			
11	4	10101		800 & 970Hz	1Hz (500ms~500ms)	BS Fire Tone	16	101	*			
12	4	10100		2850Hz	0.5Hz (1s On / 1s Off)		22	110	*			
13	14	10011		970Hz	0.8Hz (250ms On / 1s Off)		6	97	*			
14	14	10010		970Hz	Steady	BS Fire Tone	18	102	95			
15	14	10001		554 & 440Hz	100ms ~ 400ms	French Fire Tone	10	94	*			
16	16	10000		660Hz	3.3Hz (150ms On / 150ms Off)	Swedish Fire Tone	7	87	*			
17	17	01111		660Hz	0.28Hz (1.8s On / 1.8s Off)	Swedish Fire Tone	10	89	*			
18	18	01110		660Hz	0.05Hz (13s Off / 6.5Hz On)	Swedish Fire Tone	12	89	*			
19	19	01101		660Hz	Steady	Swedish Fire Tone	12	90	*			
20	20	01100		554 & 440Hz	0.5Hz (1s On / 1s Off)	Swedish Fire Tone	11	97	*			
21	21	01011		660Hz	1Hz (500ms ~ 500ms)	Swedish Fire Tone	8	88	*			
22	14	01010		2850Hz	4Hz (150ms On / 100ms Off)	Pelican Crossing	20	110	*			
23	14	01001		800 ~ 970Hz	50Hz	BS Fire Tone	16	102	*			
24	4	01000		2400 ~ 2850Hz	50Hz	BS Fire Tone	23	111	*			
25	25	00111		970Hz	3 x 500ms pulses followed by 1.5s silence then repeat	ISO 8201	12	100	*			
26	26	00110		2850Hz	3 x 500ms pulses followed by 1.5s silence then repeat	ISO 8201	18	109	*			
27	27	00101		4000Hz	Steady		33	84	*			
28	10	00100		800 & 970Hz	2Hz (250ms ~ 250ms)	BS Fire Tone	15	101	*			
29	33	00011		990 & 650Hz	2Hz (250ms ~ 250ms) (Symphoni Tones)	BS Fire Tone	19	100	96			
30	35	00010		510 & 610Hz	2Hz (250ms ~ 250ms) (Squashni Micro Tones)	BS Fire Tone	13	97	92			
31	31	00001		300 ~ 1200Hz	1Hz		19	97	*			
32	32	00000		4000Hz	Steady		33	84	*			

(i) Tones certified under the CPD (Fire Alarm Applications) are shown in the column marked EN54-3
 (ii) All other SPL measurements are taken 'on axis' & are not third party verified.
 (iii) Detailed EN54-3 polar SPL measurements are available in M96-024

CE marking under the CPD was affixed on: (see batch code on product)