



COTCO LUMINANT DEVICE (HUIZHOU) LTD.

SPECIFICATION FOR COTCO LED LAMP

Document No: SPE/LM1- AHR1-01-N1
Model No : LM1- AHR1-01-N1
Rev. No : 02
Date: 2005-08-16

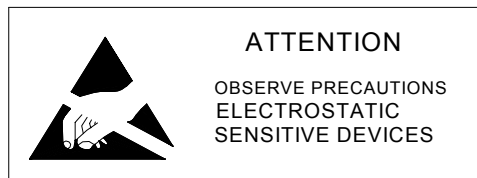
Description:

120 Degree 3.2 x 2.7mm SMT-LED in High Red
Color with Water Transparent

Dice Material: AlGaInP

Confirmed
By Customer: _____

Date: _____



Applications:

- Indicators
- Illuminations
- LCD Back Lights
- Automobile's Applications
- RGB Full Color Displays

Absolute Maximum Ratings at Ta = 25°C

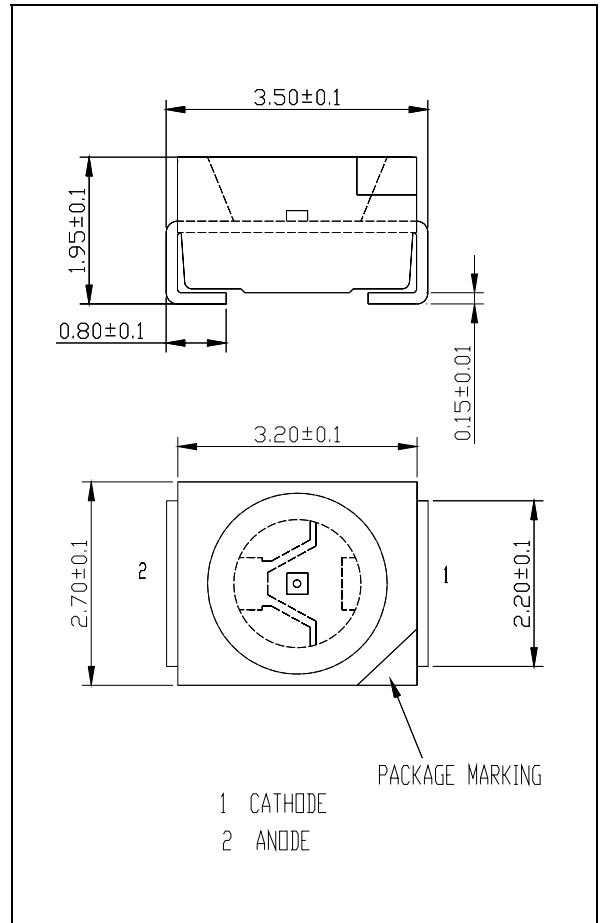
Items	Symbol	Absolute maximum Rating	Unit
Forward Current	I_F	50	mA
Peak Forward Current*	I_{FP}	200	mA
Reverse Voltage	V_R	5	V
Power Dissipation	P_D	130	mW
Operation Temperature	T_{opr}	-40 ~ + 100	°C
Storage Temperature	T_{stg}	-40 ~ + 100	°C
Junction temperature	T_j	+110	°C
Junction/ambient **	$R_{th JA}$	450	°C/W
Junction/solder point	$R_{th JS}$	300	°C/W
Electrostatic Discharge Classification (MIL-STD-883E)	ESD	Class 1	

*pulse width ≤ 0.1 msec duty $\leq 1/10$ ** Rth test condition: Mounted on PC Board FR 4 (pad size ≥ 16 mm²)

Typical Electrical & Optical Characteristics (Ta = 25°C)

Items	Symbol	Condition	Min.	Typ.	Max.	Unit
Forward Voltage	V_F	$I_F = 20$ mA	---	2.1	2.6	V
Reverse Current	I_R	$V_R = 5$ V	---	---	10	μ A
Luminous Intensity	I_v	$I_F = 20$ mA	280	500	---	mcd
Dominant Wavelength	λ_D	$I_F = 20$ mA	618	624	630	nm
50% Power Angle	$2 \theta_{1/2}$	$I_F = 20$ mA	---	120	---	deg

Dimension Drawing



Document No.	SPE/LM1-AHR1-01-N1
Rev. No.	02

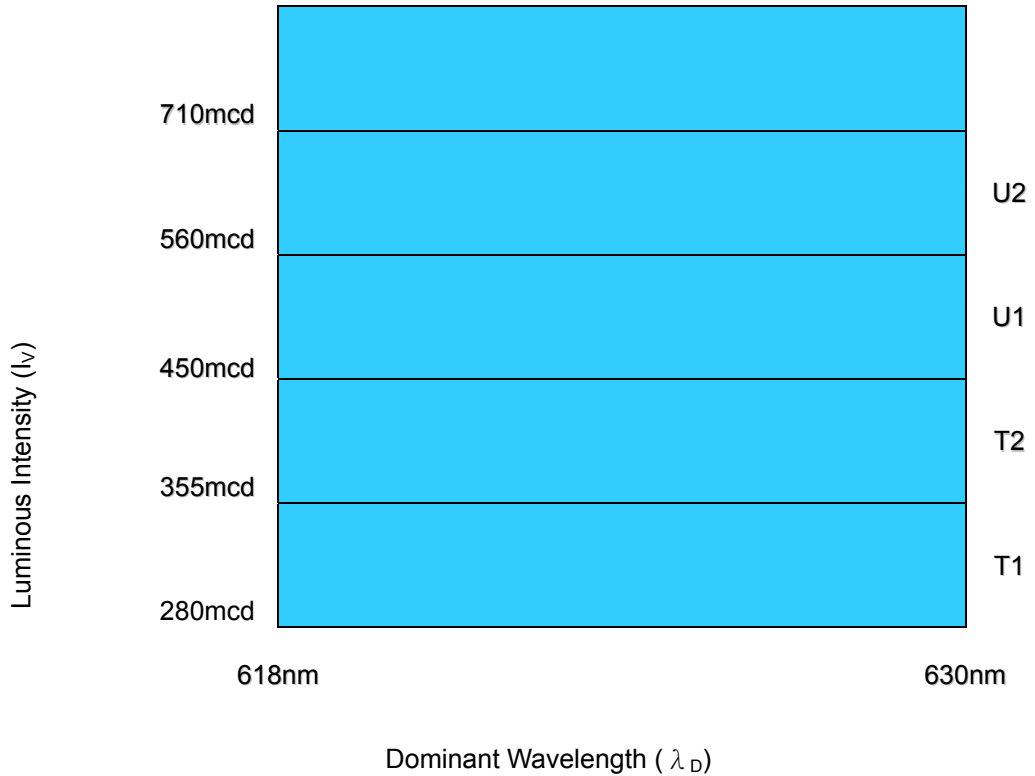
Standard bins for LM1-AHR1-01-N1 ($I_F = 20\text{mA}$):

Lamps are sorted to Luminous Intensity $-I_V$ & Dominant Wavelength $-\lambda_D$ bins shown.

Orders for LM1-AHR1-01-N1 may be filled with any or all bins contained as below.

All Luminous Intensity $-I_V$ & Dominant Wavelength $-\lambda_D$ values shown and specified are at $I_F=20\text{mA}$.

* **T1+**



* T1+ indicates Luminous Intensity is at T1 bin or above.

Important Notes:

- 1) All ranks will be included per delivery, rank ratio will be based on Dices distribution.
- 2) Tolerance of measurement of luminous intensity is $\pm 10\%$
- 3) Tolerance of measurement of dominant wavelength is $\pm 1\text{nm}$.
- 4) Tolerance of measurement of V_f is $\pm 0.05\text{V}$.
- 5) Packaging methods are available for selection, please refer to PACKAGING STANDARD.
- 6) Please refer to LED LAMP RELIABILITY TEST STANDARD for reliability test conditions.
- 7) Please refer to APPLICATION NOTES for Application.

Graphs

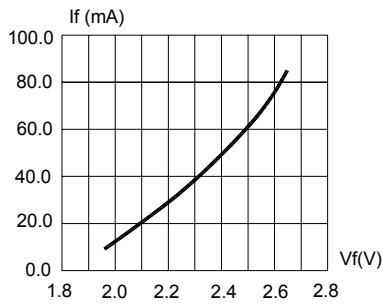


FIG.1 FORWARD CURRENT VS. FORWARD VOLTAGE.

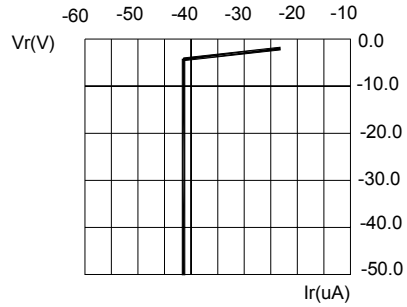


FIG.2 REVERSE CURRENT VS. REVERSE VOLTAGE.

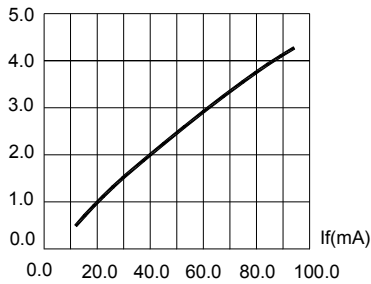


FIG.3 RELATIVE LUMINOUS INTENSITY VS. FORWARD CURRENT.

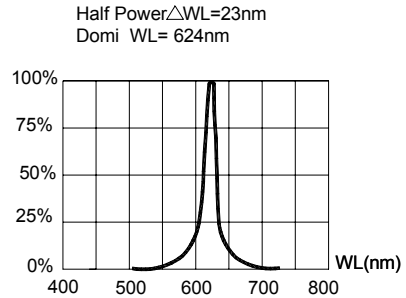


FIG.4 RELATIVE LUMINOUS INTENSITY VS. WAVELENGTH.

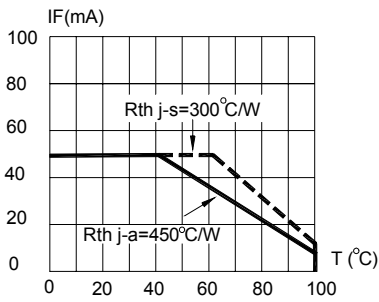


FIG.5 MAXIMUM FORWARD DC CURRENT VS TEMPERATURE. DERATING BASED ON $T_{jmax}=110^{\circ}C$

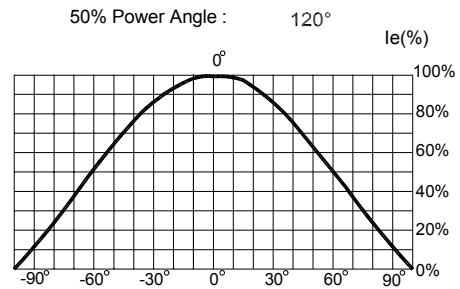


FIG.6 FAR FIELD PATTERN.

Items	Signatures	Date
Prepared by	Meiliping	2005-08-16
Checked by	XieJH	2005-08-16
Approved by	DavidLiu	2005-08-16
FCN#	FCN20050260	

Revision History		
Rev. No	Date	Change Description
02	2005-08-16	Release.

Data is subject to change without prior notice; please refer to COTCO Website for the latest version.

Copyright©2002 Cotco International Ltd.