

SP SERIES

A new series of digital panel meters combining a low profile with miniature "Component style" body. The SP series can provide splash-proof protection, when the supplied silicon seal is fitted. All these units have a 35x22mm bezel & a 34x21mm cut-out.



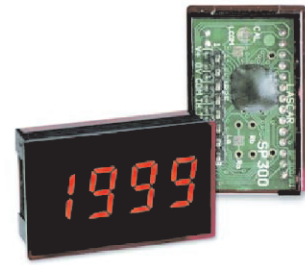
DC Voltmeter
SP100

3½ digit LED voltmeter
9.4mm (0.37") digit height
Auto-zero, auto polarity
Programmable decimal points
200mV full scale reading
Display blanking facility
Compatible with other manufacturer's modules
DIL connection
Digital hold version **SP101**



DC Voltmeter
SP200

3½ digit LCD voltmeter
9.75mm (0.38") digit height
Low battery warning
Auto-zero, auto-polarity
Programmable decimal points
200mV full scale reading
LED backlighting
Compatible with other manufacturer's modules
DIL connection



DC Voltmeter
SP300

3½ digit LED voltmeter
9.4mm (0.37") digit height
Auto-zero, auto-polarity
Programmable decimal points
200mV full scale reading
SIL connection



DC Voltmeter
SP400

3½ digit LCD voltmeter
9.75mm (0.38") digit height
Low battery warning
Auto-zero, auto-polarity
Programmable decimal points
200mV full scale reading
LED backlighting
SIL connection

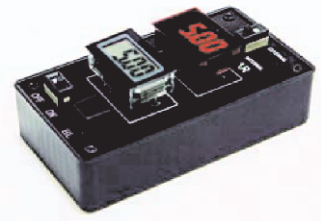


SP400 - BLUE
Blue LED backlit version



DC Voltmeter
SP8-100

3½ digit LED voltmeter
14.2mm (0.56") digit height
200mV d.c. full scale reading
50mA @ +5V d.c. power supply
Auto-zero and auto-polarity
Programmable decimal points
Bright red LED display



Evaluation Pack
SP EVAL

Complete evaluation system
Accelerates system development
SP 300 & SP 400 included
Battery powered
(9V PP3 supplied)

SP5 SERIES

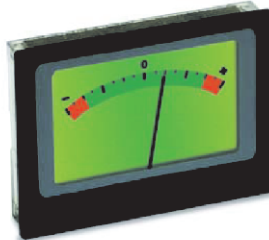
The SP5 series consists of a 2-wire, signal powered voltmeter, 1V d.c. virtual analog voltmeter and a graphics display in a clip mount housing. This range of modules has a very low profile design. Once fitted, the face of the module sits almost flush with the panel. At the rear of the module, the mounting depth is also kept to a minimum, allowing use of the space behind the module. For harsher applications, the SP5 series is supplied with a rubber seal which, once fitted makes the modules splashproof from the front.

Typical applications for this series include handheld Instrumentation and process equipment. All these units have a 48x36mm bezel & a 47x35mm cut-out.



4 to 25V d.c. Signal Powered Voltmeter
SP 5-1200-BL

3 digit LCD with 18mm digit height
LED backlighting (via separate supply)
4 to 25V d.c. operating range
Reverse polarity protection
No calibration required
Supplied with splashproof seal
Screw terminal connections



1V d.c. Virtual Analog Voltmeter
SP 5-1710-BL

17 segment virtual analog LCD with colour scale
LED backlighting
0 to 1V and -1 to 0 to 1V d.c. ranges
Auto-zero
No calibration required
Supplied with splashproof seal
Screw terminal connections



128 x 64 Pixel Graphics Display
SP 5-GFX1

128 x 64 pixel LCD
LED backlighting
6 o'clock viewing direction
Serial data interface
No calibration required
Supplied with splashproof seal
SIL 10-way connection